

### Introduction from the Editor

We thought it was time that we re-introduced our newsletters, as the last one was in July 2002 and a lot has happened since then. Our core business has always been stress analysis using Pro/Mechanica® and this has continued to be the case. However in 2001 we were asked by PTC to become a reseller of Pro/Engineer® and Pro/Mechanica. We continued to do that until 2006, but we then decided to stop, as being CAD software salesmen did not suit our style, so we decided to concentrate on our core consultancy business once more.

However we have not excluded other activities entirely, as you will see. Our expertise in both Pro/Engineer and Pro/Mechanica has meant that we are ideally qualified to run training courses in both of these, and to help companies to improve their usage of the software to design better products more efficiently.

Our Managing Director, Ray Ellender, used to be a Programme Manager in the car industry and from there developed a personal interest in the process of new product development and introduction (NPD/NPI). This has been further studied and refined to the point where we now also offer consultancy services to companies who wish to improve their new product development performance.

Given the popularity of Six Sigma quality programmes these days, this also led to the subject of Design for Six Sigma (DFSS), as part of the NPD process, and particularly tolerance analysis, so that components and assemblies are designed with  $6\sigma$  quality in mind at the outset (or whatever quality target is deemed suitable).

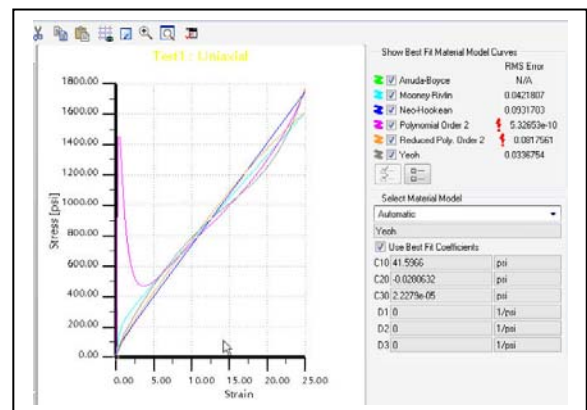
Over the years our analysis portfolio has also expanded to include mechanisms design and analysis, vibration analysis, thermal analysis, Failure Modes & Effects Analysis (FMEA) and CFD.

Although we have stopped selling general CAD software, we are happy to sell and promote specialist software that we believe in. Therefore over the past year or so, we have become the UK resellers for CETol tolerance analysis software from Sigmetrix and PD-Trak NPD process software from PD-Trak Solutions.

In this Newsletter, we will tell you a little bit about some of these activities. You can find out more by reading future Newsletters, which are scheduled to come out through the year by email, or if you can't wait, by going to our web site, or by contacting us directly.

### News

#### Pro/ENGINEER® & MECHANICA® Wildfire® 4.0 Released by PTC



At the beginning of February PTC released the production version of Wildfire 4.0.

This release of Mechanica is really exciting, because it includes

- Non-linear materials.
- Contact with Friction.
- Improved Diagnostics
- Thermal Resistance
- Import Pressure Load
- Exclude Elements at Singularities

#### Mechanica User Group Revived

With the advent of Wildfire 4.0, there is so much to talk about that we have decided to revive the Mechanica User group. Look out for the new web site, [www.promechuser.org.uk](http://www.promechuser.org.uk) and register for the meeting scheduled for 9<sup>th</sup> July 2008.

## More News

### Release of SolidWorks® Version of



CETol® links in directly with your CAD system, but up until now, CETol has only had a direct link for Pro/ENGINEER® or Catia®.

However with the release of V8.0, CETol is now available for SolidWorks.

If you want to match tolerances to manufacturing capability and predict yields at the design stage, this is the software to have.

If you don't want to have your own copy of the software, but you have a tolerance problem to solve, give us a call and we will do it for you.

### CETol V8.0

V8.0 of CETol for Pro/ENGINEER has now been released, with a host of enhancements, the most important ones being

- Animate the effects of tolerance changes
  - Flush & Gap Measurements
  - Model Advisor to help the modelling process
- Plus others – see our web site.

### Tolerance Analysis Extension

For those who want a simpler system, Sigmatrix have also just released the Tolerance Analysis Extension for Pro/ENGINEER. This is a cost-effective easy-to-use solution for doing 1-D statistical analysis, which we will be happy to

### IN-Tuition Training

In 2007 we changed the way that we do training. Instead of running scheduled classes at our office in Northampton, we now come to you, hence 'In'-Tuition. There is no fixed schedule; we agree a date between us. We have standard courses, but they can be customised for your needs.

Plus we have revised our pricing structure to make it viable even for just 1 user.

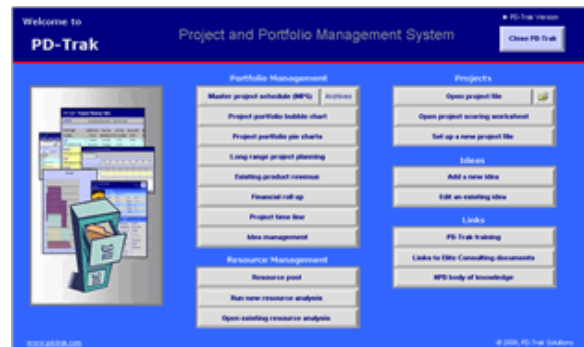
See our web site for the full list of Pro/ENGINEER & Mechanica courses, inc. Wildfire 4.0, and download our price list.

### Elite becomes UK Reseller for



### Project/Process Management Software

PD-Trak™ is a new product development (NPD) project/process management system that is based on a configurable stage/phase-gate process with portfolio management and pipeline management capabilities. PD-Trak's capabilities include: Idea Management, Resource Management, Process Templates for "NPD in a Box" & integration with MS Project®. See our web site for more information.



### Coming Events

Elite will be attending or organising these coming events in 2008

- NAFEMS Conference (10/11<sup>th</sup> June)  
We will be giving a paper.
- Revived Mechanica User Group (9<sup>th</sup> July)  
At the TIC, Birmingham City University
- CETol User Group (Oct/Nov)  
We will be creating a CETol User Group and plan to have the first meeting in October or November. Keep looking at our web site for more details.
- PTC World Event (18<sup>th</sup> Nov)  
We will be there again this year.